



BESV

BESV TRX – B / TRX – B SUV

Battery removal & installation guide

To Remove the Battery

1



Lay it down with this side facing up.

Lay the e-bike down on its **left** side for easier battery access.

Note:

Position the **right pedal at 7 o'clock** to avoid obstruction, and with the **left grip nearly vertical to the ground, which slightly raises the bike** for better clearance.

2



Unlock and remove the battery cover.

3



Unlock and carefully pull the Bosch battery out using the pull strap.

Note:

Carefully handle the battery with both hands to avoid damaging the battery.



Battery removal is complete.

Note:

1. After removing the battery, restore the cover to prevent dust and debris from entering.
2. Follow all battery safety guidelines for recharging and storage.

To Install the Battery

1



Lay it down with this side facing up.

Lay the e-bike down on its **left** side for easier battery access.

Note:

Position the **right pedal at 7 o'clock** to avoid obstruction, and with the **left grip nearly vertical to the ground, which slightly raises the bike** for better clearance.

2



Carefully push the battery into the e-bike.

Note:

1. Ensure the safety hook faces the guide rail. (For TRX-B, the **safety hook should face the front of the bike.**)
2. Keep the catch open while sliding in the battery.

3



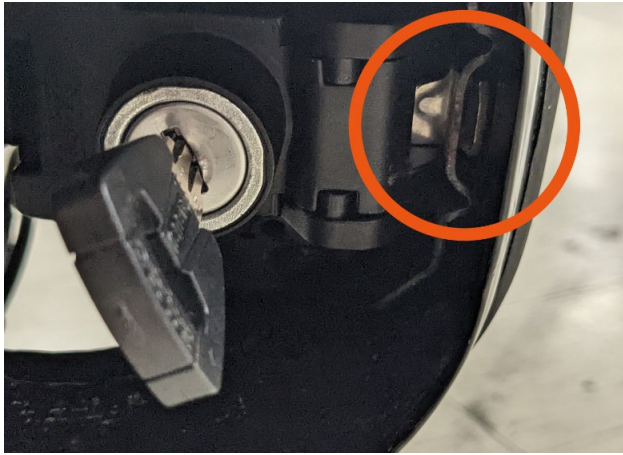
To make sure the battery is fully pushed into place, use both thumbs to push it in during the final stretch.



Note:

Once pushed all the way into the tube, the lock should naturally tilt inward as shown.

4



Lock the battery and remove the key.

Important Note:

1. You should **hear a clear “click.”**
2. Remember to **visually check that the safety hook is properly latched onto the rail.**

Warning:

If either of these doesn't happen, the battery may not be fully inserted, and there is a risk of the battery falling out while riding.

Please retry the process until the battery is securely locked onto the e-bike.

5



Restore and lock the battery cover.

Note:

1. The battery **lock key must be removed** for the cover to fit.
2. Align the cover grooves with the frame to fit.
3. **After locking the cover, test the cover to ensure it is secure and does not come loose.**

Battery installation is complete.